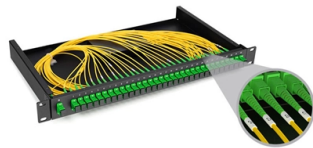


# Switch cabinet wiring should be horizontal and vertical



## Overview

Always use BOTH vertical cable management on each side, and horizontal management above AND below each switch and patch panel. Blade servers require both front and the rear accessibility. It is important to understand. To avoid the messy situation where cables turn into a tangled web after network installation, IT professionals often rely on two main approaches: horizontal and vertical cable management. But what exactly do these methods mean, and when to apply them?

That's exactly what this article will explore. Stud Terminals are used in control cabinet construction and in the area of drive motors as connection terminals for high rated currents of up to 240 mm<sup>2</sup>. The choice. The goal is roll a network cabinet to that location and then move the patch panels one at a time (or pop out the connectors and move them one at a time to new patch panels that are mounted on the “back” of a network cabinet.



## Article Content

### Cable Management Question

Always use BOTH vertical cable management on each side, and horizontal management above AND below each switch and patch panel. For cables running between two or more adjacent

### Horizontal vs. Vertical: Best Cable Management System

This article explores the pros and cons of both horizontal and vertical cable management systems and discusses when each option is most suitable.

### Understanding Electrical Wiring Diagrams | Zuken EN

E3.series encompasses schematics design, wiring design as well as fluid diagrams, through to applications for control cabinet and wire harness layout in 2D and 3D

### Dos, don'ts and precautions in wiring cables and conductors ...

This technical article covers recommendations for choosing cross-sections of the wiring conductors inside switchboards, their connection methods, various wiring dos, don'ts and

### Horizontal, Vertical, or Wherever the screw lands?

The vertical screws may be the "right" way that was instructed, but looks horrible from a design perspective and clashes with the lines closest to them. The bigger

### Cabinet Wiring: Everything you must know

1.9 If the cabinet contains switches for both internal and external networks, use two different colored network cables to differentiate them. Cabinet wiring is a technical

### Cable management in cabinet and between cabinets

We need to have a way of easily sending cables between all three cabinets (for instances copper or the switch VC cables). As

### Cabinet Wiring: Everything you must know

With the vigorous development of the internet industry and the upgrades of network products like servers and switches, the cabinets used need to accommodate

### Kitchen outlets horizontal vs vertical | Houzz Forum

We installed our switches horizontally and just a few inches below the upper cabinets, to reduce their visibility. Same reason we installed the backsplash outlet horizontally and right above the countertop.

### APPLYING PROPER CABLE MANAGEMENT IN IT RACKS

Network cabinets house network switches and patch panels. These cabinets have the highest concentration of cabling in the data center, making patch cord management even more critical and

### Service and Meter Requirements

Contracts for the electrical installation should include the requirement that all electrical wiring and apparatus conform with the requirements of applicable governmental codes, as well as the standards

### The Ultimate Guide to Electric Switch Board Wiring:

Learn the basics of electric switch board wiring, including how to connect wires, install circuit breakers, and troubleshoot common issues. Find step-by-step

### Kitchen outlets horizontal vs vertical | Houzz Forum

It doesn't really matter whether your kitchen is modern or traditional--switches and outlets right in the middle of the backsplash is something to avoid when possible.

EDMS No. 1976873

Signs, pushbuttons, illuminated pushbuttons and devices with adjustable or movable housing parts on the doors of the switch cabinets must be aligned vertically and perpendicular to each other.

### Horizontal, Vertical, or Wherever the screw lands?

Vertical, so they match with the switches. That's the first time I've heard a logical reason for it. I usually do horizontal for covers with more than one screw, vertical

### Cable routing | Tips for proper cabling | Simply explained

The choice between vertical and horizontal cable routing depends on the spatial conditions, the building structures and the requirements of the installation in

### Routing a light switch to the side of a cabinet

0 I'm installing some floor to ceiling cabinets and due to the existing configuration, a light switch will need to be moved to the side of the cabinet.

### AS/NZS 3012:2010 Electrical installations Construction and demolition

PREFACE This Standard was prepared by the Joint Standards Australia/Standards New Zealand Committee EL-001, Wiring Rules, to supersede AS/NZS 3012:2003. This Standard incorporates

### Switchboard Construction Basics For Engineers | EEP

Buses are mounted within the frame, vertical and horizontal The following rear view drawing of a switchboard illustrates vertical and horizontal bus

### Switchgear cabinet installation >> FTG - Friedrich Göhringer ...

In some cases it makes sense to apply the vertical busbar horizontally. As seen in the small distributor in the right picture. Here, the Pan Assembly busbar is used to save space in tight applications. Also, the

[How\\_to\\_build\\_an\\_electric\\_switch\\_cabinet\\_fragments](#)

How to build an electric switch cabinet for the KNX system? Step by step we will guide you through the process of assembly and construction of large electric switch cabinets.

1926.403

Working space. The minimum clear working space in front of electric equipment such as switchboards, control panels, switches, circuit breakers, motor controllers, relays, and similar equipment shall not

[What are the 6 components of structured cabling?](#)

Learn about the six components of structured cabling, how they interconnect and the benefits of standards-based cabling infrastructure.

[Switchgear cabinet installation >> FTG - Friedrich Göhringer ...](#)

FTG offers a wide range of flexible wiring systems. The double-pole Auxigaine busbars are suitable for superstructures up to 1.90m in length and for a maximum current of 125A. In addition, a horizontal

[Control Panel Layout And Wiring Best Practices.](#)

The quality of the wiring methods used in an industrial control panel can vary quite widely. This article summarizes what this author believes are some best practice when it comes to

## Contact Us

For more information, pricing, or custom solutions, please contact us:

Website: <https://ourensemeeting.es>

Email: [sales@ourensemeeting.es](mailto:sales@ourensemeeting.es)

Phone: +34 685 473 921

Address: Calle de Alcalá, 25, 28014 Madrid, Spain

This document is for informational purposes only. Specifications subject to change without notice.

