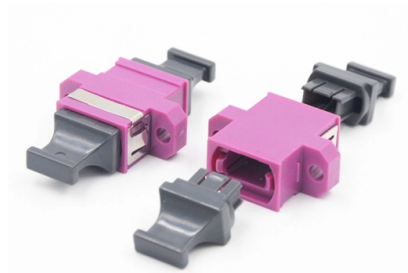


# Requirements for the installation location of distribution box brackets



## Overview

Check for proper IP/NEMA ratings and material quality. Ensure safe placement: install in dry, accessible areas with good ventilation and at appropriate height (typically ~1. Practice good wiring: secure grounding, neat cable management, proper insulation, and correct wire. In this guide, we'll break down everything you need to know to install a distribution box correctly and confidently. The following are some key steps and considerations to confirm whether the installation location of the box is reasonable. Check the safety of the. The installation requirements and specifications of Distribution box involve many aspects, including site selection, fixing method, wiring specifications and safety protection. Accessibility is one of the most. This installation should be periodically inspected and tested and a report on its condition obtained, as prescribed in the IET Wiring Regulations BS 7671 Requirements for Electrical Installations. Recommended date of next inspection.



## Article Content

Summary of key points for construction and installation of distribution ...

The construction and installation points of distribution boxes and switch boxes are summarized as follows: 1. Select qualified products that meet national standards and safety requirements.

NEC Requirements for Panelboards and Load Centers

The National Electrical Code (NEC) provides comprehensive safety standards for electrical installations, including requirements for electrical panels (main service

How to Improve the Installation Quality of Distribution Boxes

Learn key methods to enhance distribution box installation quality, including location, height, wiring, and safety compliance.

Requirements And Specifications For Installation Of

The installation requirements and specifications of Distribution box involve many aspects, including site selection, fixing method, wiring specifications

Installation Height And Location Selection Requirements For Ground ...

Choosing a suitable installation location requires comprehensive consideration of multiple factors. The stainless steel surface mount electrical box should be installed in a safe, dry, well-ventilated, and

The Complete Guide to Distribution Box: Installation, Types & More

Making Smart Electrical Infrastructure Decisions Distribution boxes form the foundation of safe and reliable electrical systems. Understanding their components, installation requirements, and

How to Install a Distribution Box—A Comprehensive

Before starting the installation, finding a proper place for putting the distribution box is crucial, because it largely decides the safety and convenience

Latest Requirements for Distribution Box Installation under the US

When Professional Installation Matters Most While DIY electrical work has its place, distribution box installation isn't it. Consider these real cases: The Lakehouse Disaster: After saving

Size determination, installation method and wiring mode

The distribution box is the central hub of the home circuit and the general control of our daily power consumption. It is an indispensable electrical equipment. If there

Installation points of household distribution box

The distribution box of household distribution box should not be installed too high. Generally, the installation elevation is 1.8m to facilitate operation; the electric pipe

Installation requirements for distribution boxes

Installation of closed or explosion-proof electrical facilities; distribution box electrical components, meters, switches and lines should be arranged neatly, firmly installed, easy to operate.

How to Install a Cable Distribution Box Safely and

Conduct a detailed survey of the installation site to determine the installation location of the cable distribution box. The installation location should

How to Install a Distribution Box—A Comprehensive

Whether you are an electrical contractor or a construction brigade, knowing how to properly and safely install distribution boxes is the basis of

Distribution Box Installation: A Complete Guide to Safe

The distribution box, often referred to as a breaker box, fuse box, or electrical panel, is a critical component of any electrical system. It acts as the central hub for

Safety requirements of distribution box

The distribution box has the characteristics of small size, simple installation, special technical performance, fixed location, unique configuration function, not limited by

Key Points Of Installation And Collocation Of Distribution Box In ...

If they are combined in the same distribution box, power and lighting lines should be set separately. 7. The wire inlets and outlets in the distribution box and switch box shall be set at the lower bottom of

Requirements for Electrical Installations

This installation has wiring colours to two versions of BS 7671. Great care should be taken before undertaking extension, alteration or repair that all conductors are correctly identified.

Key Points Of Distribution Box Installation

3. Distribution box and switch box shall be installed in ventilated, dry and normal temperature places. It is strictly prohibited to install it in the gas, flue gas, steam, liquid and other harmful media with severe

The Best Solution to Install Components Inside The

The trickiest part of installing inner components of a distribution box is that the components' heights are irregular. E-Abel's flexible mounting bracket can

How to confirm whether the installation location of the

By checking the safety of the installation location, the convenience of operation and maintenance, regulatory compliance, future scalability, and on-site

Electric Panel Installation Method Statement

METHOD STATEMENT FOR Electric panel and distribution box installation and termination - Free download as PDF File (.pdf), Text File (.txt) or read online for

## Contact Us

For more information, pricing, or custom solutions, please contact us:

Website: <https://ourensemeeting.es>

Email: [sales@ourensemeeting.es](mailto:sales@ourensemeeting.es)

Phone: +34 685 473 921

Address: Calle de Alcalá, 25, 28014 Madrid, Spain

This document is for informational purposes only. Specifications subject to change without notice.

