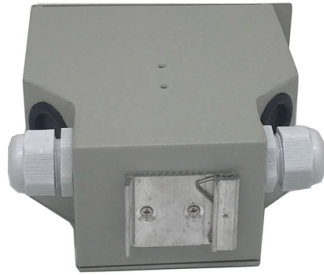


Common Issues with Temporary Power Distribution Boxes at Construction Sites



Overview

Temporary power systems are essential for construction projects, yet they often introduce serious safety risks. Loose wiring, exposed connectors, and unstable electrical connections can cause shocks, equipment failures, or costly downtime. Yet things often go wrong when installing or renting these installations, resulting in risks to safety, continuity and legal compliance. However, exposure to weather, frequent relocation, rough use and other conditions not normally encountered with conventional wiring systems necessitate special consideration not required in other applications or in completed structures. With the increasing complexity of construction projects and the demand for efficiency, understanding the guidelines surrounding 8 essential formulas with worked examples - Ohm's Law, Watt's Law, voltage drop, transformer ratio. A printable 2-page reference card sent to your inbox. Need to renew your Electrician license?

Pick your state and browse state-approved Electrician CE courses — complete your continuing education. Temporary electrical systems for construction are essential, not just for operational efficiency but also for safety. From electrical shocks to fire hazards, the stakes are high without.

Article Content

Step-by-Step Guide: Temporary Construction Site Power

Looking for temporary power for your construction site? Let us walk you through the process to ensure you don't miss any important steps.

Five mistakes when installing temporary distribution boxes and how to ...

In this article you will read about the five most common mistakes when installing temporary distribution boxes and practical tools to avoid them. Whether you are an installer yourself

Temporary Power Safety Solutions

One of the more common violations cited by OSHA is the improper use of conventional outlet boxes for temporary power applications. It is NOT acceptable

How to Get Temporary Power for Your Construction Site

Temporary power is a short-term or nonpermanent power structure. It's a safe and reliable electricity supply for tools, lights and facilities for the duration of a

Best Practices for Installing Temporary Electrical Systems on ...

Learn how to set up and maintain reliable temporary electrical systems for construction projects.

Construction

Construction work requires electrical power for many purposes. However, exposure to weather, frequent relocation, rough use and other conditions not normal-ly encountered with conventional wiring

A Guide to Temporary Power Distribution Boxes | ATI

Temporary power distribution boxes are a popular method of providing electrical power to remote areas. Learn about the benefits of using

The Ultimate Guide to Temporary Power Distribution Boxes

Temporary Power Distribution Box Temporary power distribution boxes play a crucial role in ensuring that electrical power is safely and efficiently

Common Applications for Temporary Power Distribution

Whether you're hosting a fair or overseeing a construction site, ensuring you have suitable power distribution is crucial. For outdoor applications, you must

Temporary Power Construction Site Guide: Industrial Plug Sockets,

Discover how to supply temporary power safely on construction sites using E-abel distribution boxes, industrial plug sockets, and IP67 connectors for reliable outdoor electricity.

How to Choose the Right Temporary Power Supply for

Why choose Design Switchboards and Distribution? At Design Switchboards and Distribution, we offer high-quality, compliant, and reliable temporary power boards

Temporary electrical wiring for construction sites

Power lines are constant hazards in a construction area. If a power line must be protected or moved, contact utility company before with the construction process or equipment. Where this is not

Temporary Construction Power Box Guide: Portable Distribution

Learn how temporary power boxes work on construction sites. Discover how E-abel portable distribution cabinets and IP67 waterproof connectors ensure safe and reliable job site

New Construction Temporary Power Systems

Portable Power If there is limited time available to construct a temporary power system, it may be best to rent or buy portable power equipment such as generators, type-w generator cables,

Managing Electrical Safety for Temporary Power on Job

Improve temporary power safety with our expert guide. Learn about NEC Article 590, GFCI protection, grounding, and OSHA standards for qualified electricians.

Temporary electrical installations on construction and

Every year, the use of electricity on construction sites results in accidents from electric shock and burns which can be serious or even fatal. This

Temporary electrical wiring for construction sites

Temporary for construction Construction work requires electrical power for many purposes. However, exposure to weather, frequent relocation, rough use and other conditions not normally encountered

How to Make Temporary Power Safer on Construction

Temporary power systems are essential for construction projects, yet they often introduce serious safety risks. Loose wiring, exposed connectors, and

Temporary Power Safety: Distribution Boxes + Industrial

Learn how construction power, temporary electrical boxes, and IP67 connectors combine with E-abel distribution panels and Weipu industrial

What are the common problems of distribution boxes?

The main problems encountered with distribution boxes include installation and layout problems, electrical connection and grounding problems,

How To Maximize Worksite Safety When Using Power Distribution Boxes

Some common violations found with temporary power on construction sites are wiring not rated or listed for the application, and openings not covered on distribution panels.

Essential Guidelines for Safe Temporary Electrical

Temporary electrical installations for construction sites are crucial for powering tools and equipment, but they also pose significant risks if not managed properly. With

Essential Guidelines for Safe Temporary Electrical

This article aims to provide a comprehensive overview of the essential guidelines for safe temporary electrical installations on construction sites, focusing on Best

Best Practices for Installing Temporary Electrical Systems on ...

Duraline's Temporary Electrical Systems for Construction Duraline's temporary electrical systems for construction are designed to be innovative and meet the diverse needs of modern construction sites.

Temporary Jobsite Power Setup: NEC & OSHA Compliance Guide

Ensure NEC & OSHA compliance with your temporary jobsite power setup using a reliable industrial portable power station.

5 Benefits of Using a Temporary Distribution Box

If you're looking for a safe, efficient way to power equipment for outdoor job sites or events, read these benefits of using a temporary distribution

Temporary electrical installations on construction and

Electrical site distribution equipment All units for the distribution of electricity are to comply with BS 4363 Specification for distribution assemblies for

Common Temporary Worksite Electrical Issues & Solutions!

Explore common temporary worksite electrical issues and how to solve them with smart solutions to boost safety, efficiency, and site compliance. Keep reading!

Safety Guidelines for Temporary Power Distribution

Learn about the essential safety guidelines for temporary power distribution to protect employees from electrical hazards.

Electrical safety in the construction industry

Electrical hazards on construction sites can put workers at risk of injury or death. Learn how to control electrical risks on construction sites, fulfil your legal obligations, and keep yourself and

Contact Us

For more information, pricing, or custom solutions, please contact us:

Website: <https://ourensemeeting.es>

Email: sales@ourensemeeting.es

Phone: +34 685 473 921

Address: Calle de Alcalá, 25, 28014 Madrid, Spain

This document is for informational purposes only. Specifications subject to change without notice.

